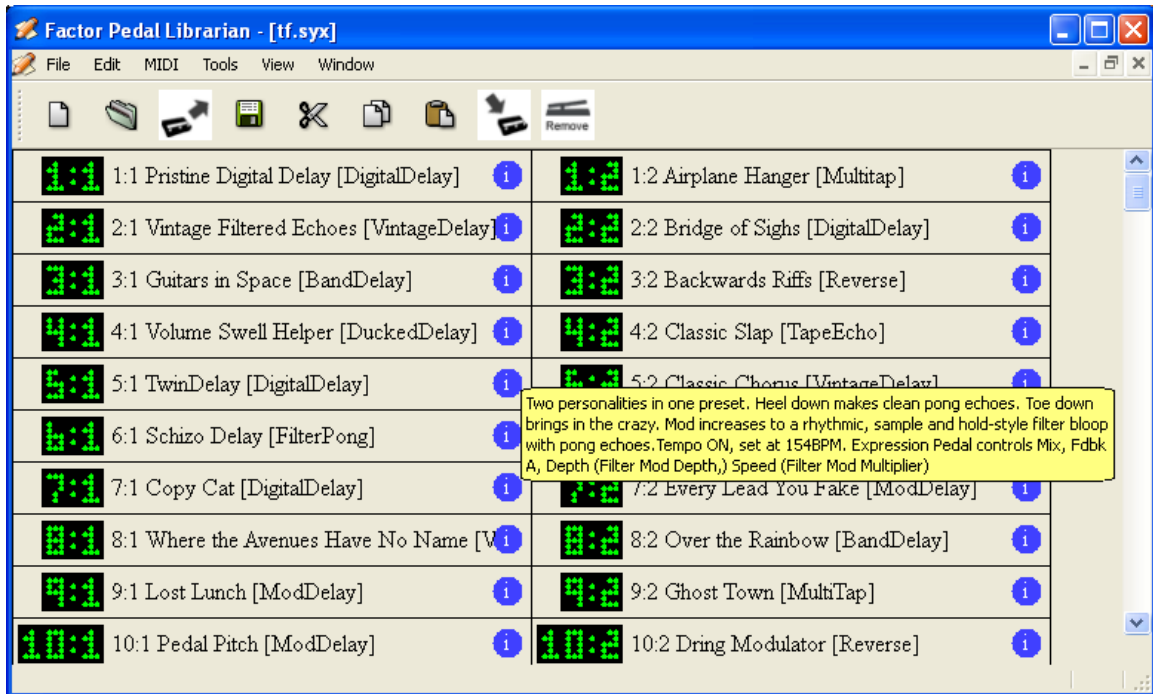


# FactorLib User Manual


FactorLib is an application for either Windows or OSX allowing the user to manipulate presets from an Eventide stompbox. It may be thought of as a Library Manager and can be used to archive, delete or re-order presets, as well as uploading or downloading them via MIDI or USB.

FactorLib operates the same way on either supported platform – this document shows the Windows version, but the Mac version is very similar, just more hip.

For *Installation* instructions as well as details of supported operating systems, see page 5.



Each collection of presets is viewed as a *document*, and has its own window.

Each preset is shown with its bank and preset number, along with an optional title and comment. The titles and comments displayed are not currently supported by the Eventide stompboxes but may be in the future. In the view above, the green numerals are the Bank and Preset numbers and cannot be changed (the presets may be re-ordered but these numbers are always sequential). The small black numbers are part of the preset titles, and may be changed as described below. A preset's comment (yellow block above) may be displayed by moving the mouse over its  symbol.

When FactorLib is first started, the TimeFactor, ModFactor and PitchFactor factory presets will be available as Recently Used files (see *File Menu* below). These can be found in the FactorLib installation folder (Windows) or /Library/Application Support/FactorLib (Mac).

It is not possible to (for example) send TimeFactor presets to a PitchFactor, as this makes little sense and will not usually have the expected result.

# FactorLib User Manual

## Mouse Operations

### Selecting Presets

A single preset may be selected by left-clicking on it with the mouse. A range of presets may be selected by clicking on the first in the range and then clicking on the last with the Shift key held down. Individual presets may be added to a selection by clicking on them with the Ctrl (*command* ⌘ on Mac) key held down. Selected presets are shown in yellow.

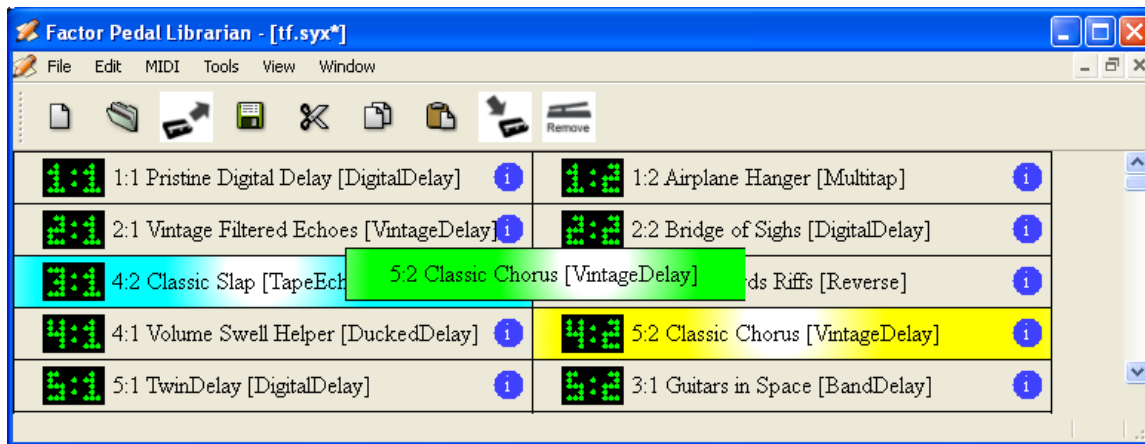
### Moving Presets

Presets may be moved by clicking on one or more selected presets and dragging the selection to another position, but if the Ctrl (*command*) key is held down before the mouse is released (or the destination is in a different document), the selection will be copied rather than moving it. If the Shift key is instead held down, the selection will replace the destination presets. If you make a mistake here, you can always *undo* it (see below).

The destination will be shown in blue, with the moving preset(s) shown in green. It is possible to move to a point after the last preset to add to the end.

Note that moved or copied presets will be placed in front of the destination, which can cause mild visual confusion if the preset(s) is (are) *moved* from a place before the destination – in this case the presets will appear to be moved one place too early. But, of course, it is not.

Presets can be copied from other *documents* or indeed other copies of FactorLib. Note that the *move* option is only available when source and destination are in the same document. For obvious reasons, it is not possible to copy presets to a document belonging to a different member of the Factor family.



### Changing a preset's title or comment

A preset's title may be changed by double-clicking on it and editing it in the normal way. Similarly, a comment may be changed by double-clicking on the (i) symbol.

# FactorLib User Manual

## Menu Commands

FactorLib has a number of menus, many of whose commands have icons which are visible on the toolbar below the menus. If the mouse is moved over an icon on the toolbar or over a menu item, a description of its function will appear on the *status bar* at the bottom left of the FactorLib display.

### **File Menu**

#### **New**

Create an empty document

#### **Open**

Open an existing document

#### **Open from MIDI**

Create a new document by downloading presets from an Eventide stompbox.

#### **Close**

Close a document. If the document had changed, you will be asked if you want to save it

#### **Save**

Save a document to disk.

#### **Save As...**

Save a document with another name (make a copy).

#### **Add Preset**

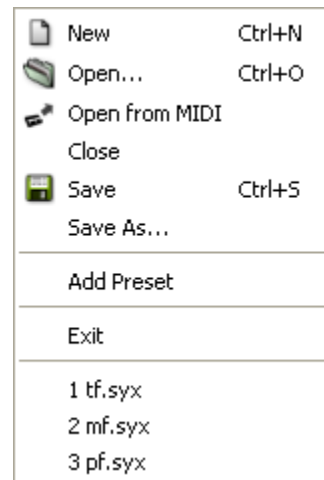
Add a MIDI file as a preset.

#### **Exit**

Close the FactorLib application. You will be prompted to save any changed documents.

#### **Recent Documents (1.,2. etc)**

An easy way to reload recently used documents. When FactorLib is first started, the TimeFactor, ModFactor and PitchFactor factory presets will be available as Recently Document files. Later, they can be found in the FactorLib installation folder (Windows) or /Library/Application Support/FactorLib (Mac).



### **Edit Menu**

#### **Undo**

Undo the last command – this is a very useful way to recover from mistakes. A large number of previous commands may be undone.

#### **Cut**

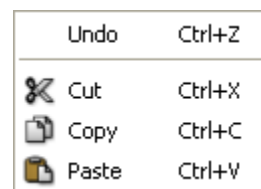
Remove the currently selected text or preset(s) and copy it (them) to the clipboard.

#### **Copy**

Copy the currently selected text or preset(s) to the clipboard.

#### **Paste**

Copy the text or preset(s) on the clipboard to a position just before the currently selected point. If no preset is selected the copied preset will be moved to the end of the document.

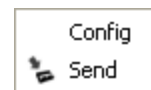


# FactorLib User Manual

## **MIDI Menu**

### **Config**

Select the MIDI devices from which to send and receive. These will be the USB or MIDI connections to your Factor pedal. When connected by USB, the stompbox will appear as “USB Audio Device” on a Windows system, or as “Timefactor Pedal” (etc) on a Mac.



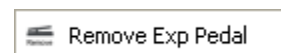
### **Send**

Send the current document or selection to your Factor pedal. It will complain vigorously if either no or the wrong type of pedal is connected.

## **Tools Menu**

### **Remove Exp Pedal**

This is a convenience to quickly remove all expression pedal control from the current document or selection.



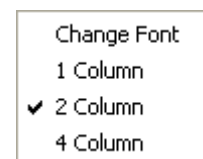
## **View Menu**

### **Change Font**

Allows you to change the text font used. The display will scale with font size.

### **Select number of columns**

Allows you to select the number of columns per document from 1, 2 and 4.



## **Window Menu**

### **New Window**

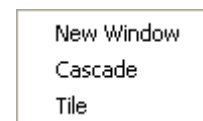
Create a new window giving another view of the currently active document.

### **Cascade**

Arrange the windows diagonally down the screen so that they overlap one another, with the active window on top.

### **Tile**

Arrange the windows side-by-side so that they fill the document area. This is mainly useful for line by line comparisons.



# *FactorLib User Manual*

## ***Installation***

FactorLib may be installed on either Windows or Macintosh. Parts of the package are covered by the GNU Lesser General Public license which is included in the installation. In the unlikely event that you wish to customize or modify this software you should only do it according to the terms of this License.

### ***Windows Installation***

FactorLib requires Windows XP, service pack 3. Its memory and disk requirements are modest. It has not yet been fully tested on Windows Vista, but is not expected to have problems.

FactorLib is supplied as a self-expanding zip file in .exe form. To install, double-click or run the file. The contents will be decompressed and copied to a destination directory, normally C:\Program Files\Eventide\FactorLib. To run the program, double-click or run FactorLib.exe. You may want to create a shortcut and copy it to your Desktop.

Some Windows systems require some extra files to run FactorLib – this will be shown by the following helpful, friendly and informative system error message *“This application has failed to start because the application configuration is incorrect. Reinstalling the application may fix this problem.”* To change this, you need to download and install a Microsoft file [vcredist\\_x86.exe](#). To obtain it, click on [Visual C++ 2008 Redistributable Package \(x86\)](#) and follow the download and installation instructions.

To get to the above download page directly, copy and paste or enter the following direct link into your browser:

<http://www.microsoft.com/downloads/details.aspx?displaylang=en&FamilyID=9b2da534-3e03-4391-8a4d-074b9f2bc1bf>

### ***Macintosh Installation***

FactorLib requires OSX 10.5 (Leopard) or later. Its memory and disk requirements are modest. It is supplied as a dual-binary package and may be installed on either Intel or PPC systems. It has not yet been tested on OSX 10.6 (Snow Leopard).

Double-click the package to run it and follow any instructions. You will need to enter an Administrator password when requested. Note that while the installer claims to need around 32.0 KB of space, it actually requires just over 28MB.

The main program will be placed in /Applications, while some data files will be placed in /Library/Application Support/FactorLib.